

# Safety Secondary Access Community Planning & Evacuation Routing Study

**TEHAMA COUNTY**

**SAFETY, SECONDARY ACCESS  
COMMUNITY PLANNING &  
EVACUATION ROUTING  
PROJECT**



**Presented by:**



[www.TehamaEvac.com](http://www.TehamaEvac.com)

# INFORMATION

- Existing Conditions
- Identify Threats
- Identify High Hazard Areas
- Identify Evacuation Routes
- Analyze Evacuation Conditions
- Project Recommendations
- Prepare Implementation Plan

## PLANNING FUNDING

- Caltrans
- Cal OES
- CALFIRE



**Cal OES**  
GOVERNOR'S OFFICE  
OF EMERGENCY SERVICES

# PROJECT PROCESS

- Existing Conditions
- Stakeholders
- ➔ **Community Input**
- Analysis
- Recommendations
- Funding Strategy
- Implementation
- Plan Adoption



**Trinity County Regional Transportation Plan**

1. Which general area do you live in or travel from the most often?

- Weaverville
- Hayfork
- Lewiston
- Coffee Creek/Trinity Center
- Hyampom
- Douglas City
- Junction City
- Mad River
- Round Valley Reservation
- Hawkins Bar/Trinity Village
- Burnt Ranch
- Elsewhere in Trinity County (please list) \_\_\_\_\_
- I do not live in Trinity County

2. What are your most frequent out-of-county destinations?

- Redding
- Willow Creek
- Eureka
- Fortuna
- Crescent City
- Arcata
- Hoopa
- McKinleyville
- Yreka
- San Francisco/Bay Area
- Sacramento
- Other (please list): \_\_\_\_\_

3. How often do you drive a vehicle on average?

- Daily
- A few times a week
- A few times a month
- A few times a year
- I do not drive

4. Approximately how often do you use public transit?

- Daily
- A few times a week
- A few times a month
- A few times a year
- I do not use public transit

5. Approximately how often do you ride a bicycle (including utilitarian or recreational)?

- Daily
- A few times a week
- A few times a month
- A few times a year
- I do not ride a bicycle

6. Approximately how often do you walk in Trinity County? (including utilitarian or recreational)

- Daily
- A few times a week
- A few times a month
- A few times a year
- I do not go for walks

7. How far do you commute to work or school?

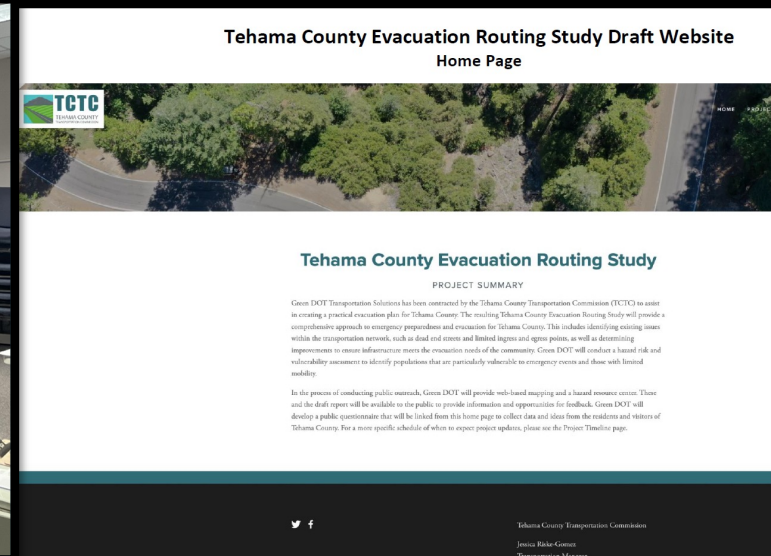
- Less than 1 mile
- 1 - 2 miles
- 2 - 5 miles
- 6 - 15 miles
- 16 - 30 miles
- 31 - 50 miles
- 51 - 99 miles
- 100+ miles

8. How far do you commute to other necessary destinations, such as the grocery store?

- Less than 1 mile
- 1 - 2 miles
- 2 - 5 miles
- 6 - 15 miles
- 16 - 30 miles
- 31 - 50 miles
- 51 - 99 miles
- 100+ miles

9. If you have school-aged children, how far do they commute to school?

- Less than 1 mile
- 1 - 2 miles



**Trinity County Department of Transportation**  
March 11 at 10:21 AM

Want to learn about the Regional Transportation Plan? Have thoughts on what transportation improvements you want to see in your community? JOIN US in for in-person community meetings in Weaverville and Hayfork! Other meeting locations and dates to come. Find meeting information at <https://www.trinity-rtp.org/> Can't attend but have feedback? Take this survey! <https://www.surveymonkey.com/r/trinityrtp>

**COMMUNITY MEETING REGARDING THE TRINITY COUNTY REGIONAL TRANSPORTATION PLAN**  
**MARCH 28 & 29, 2022**

Join us for a community meeting in Weaverville or Hayfork to learn about the 2022 Regional Transportation Plan and provide input on the transportation system. Don't live in Weaverville or Hayfork and can't make it over? We will have more upcoming community meetings in other locations!

<p><b>WEAVERVILLE MEETING</b> Weaverville Library 351 Main St, Weaverville, CA 96093 March 28, 2022 5:30-7:00 PM</p>	<p><b>HAYFORK MEETING</b> Roderick Senior Center 90A Coral Ave, Hayfork, CA 96041 March 29, 2022 5:30-7:00 PM</p>
--	---

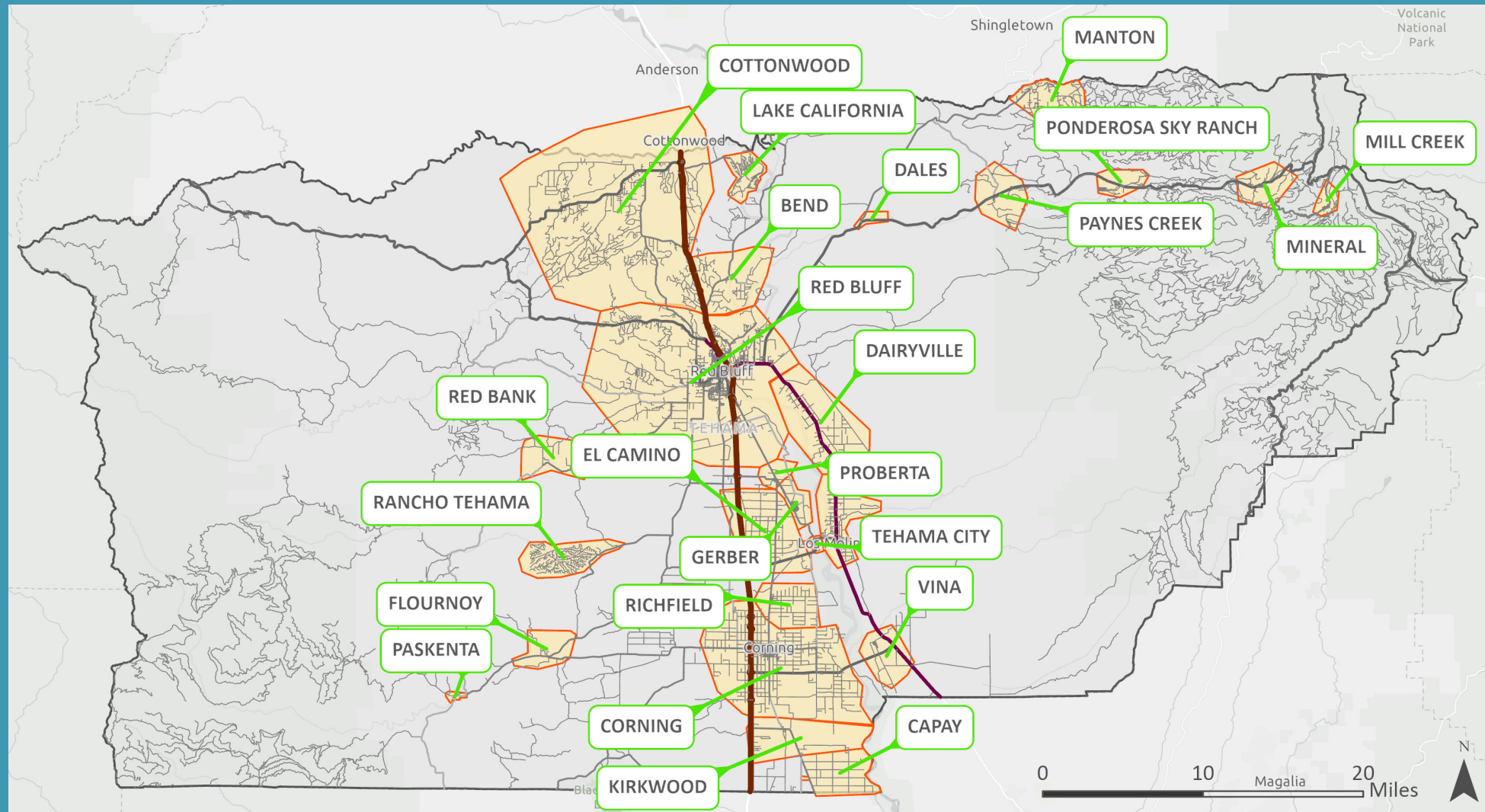
For more information, visit [www.trinity-rtp.org](http://www.trinity-rtp.org), or scan the QR code above to take our survey!

Language needs, accessibility needs or questions?  
Contact Sofia Lepore at: [sofia@greendottransportation.com](mailto:sofia@greendottransportation.com) | 530-895-1109

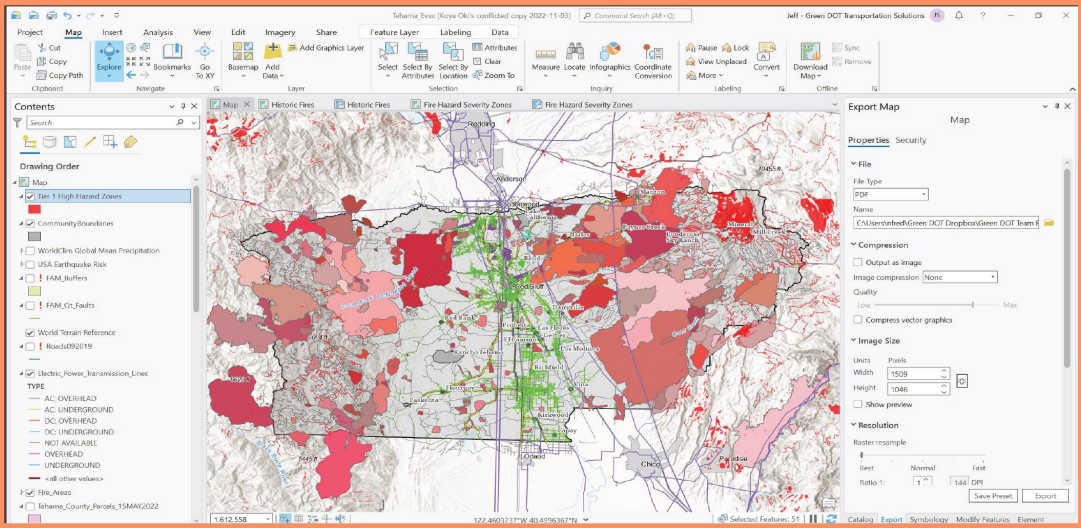
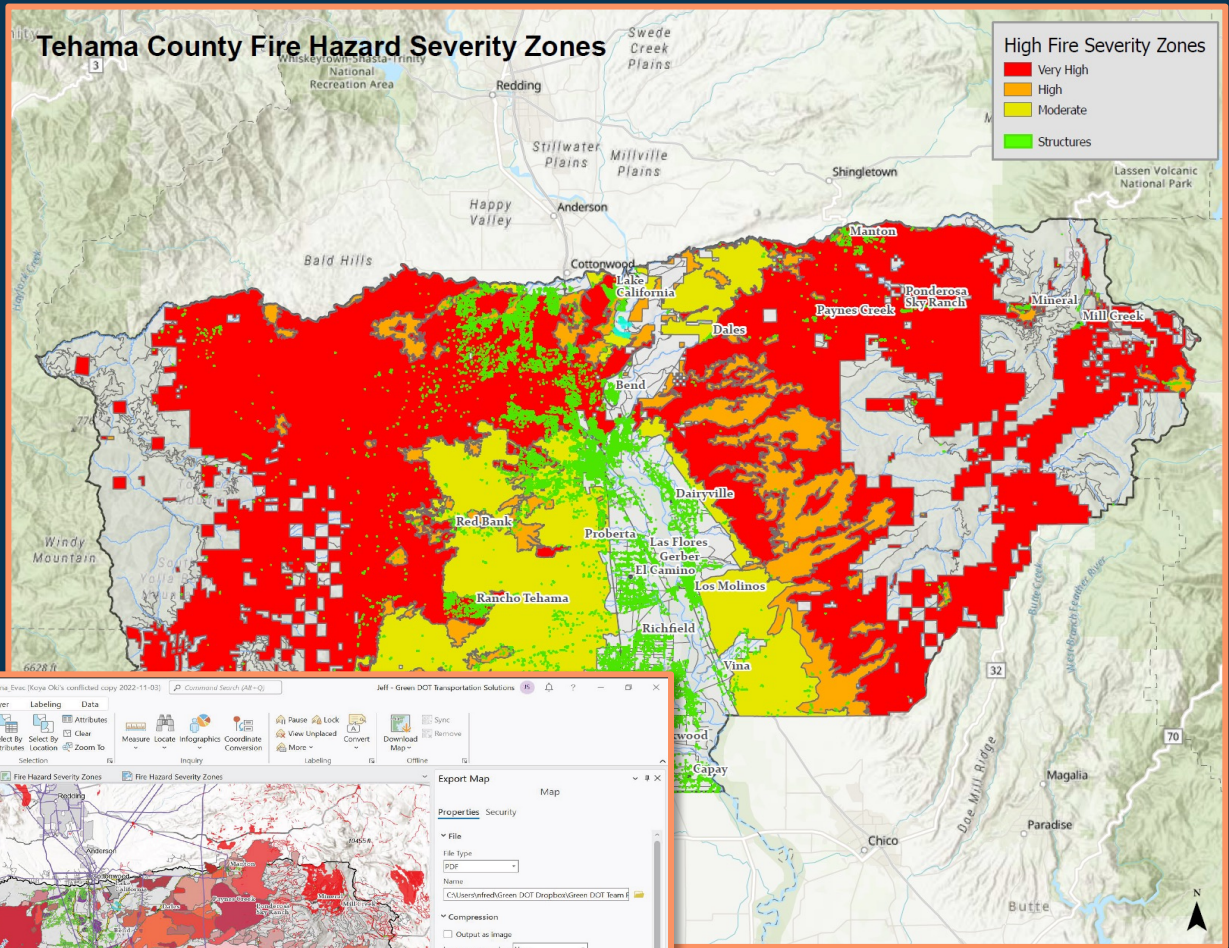
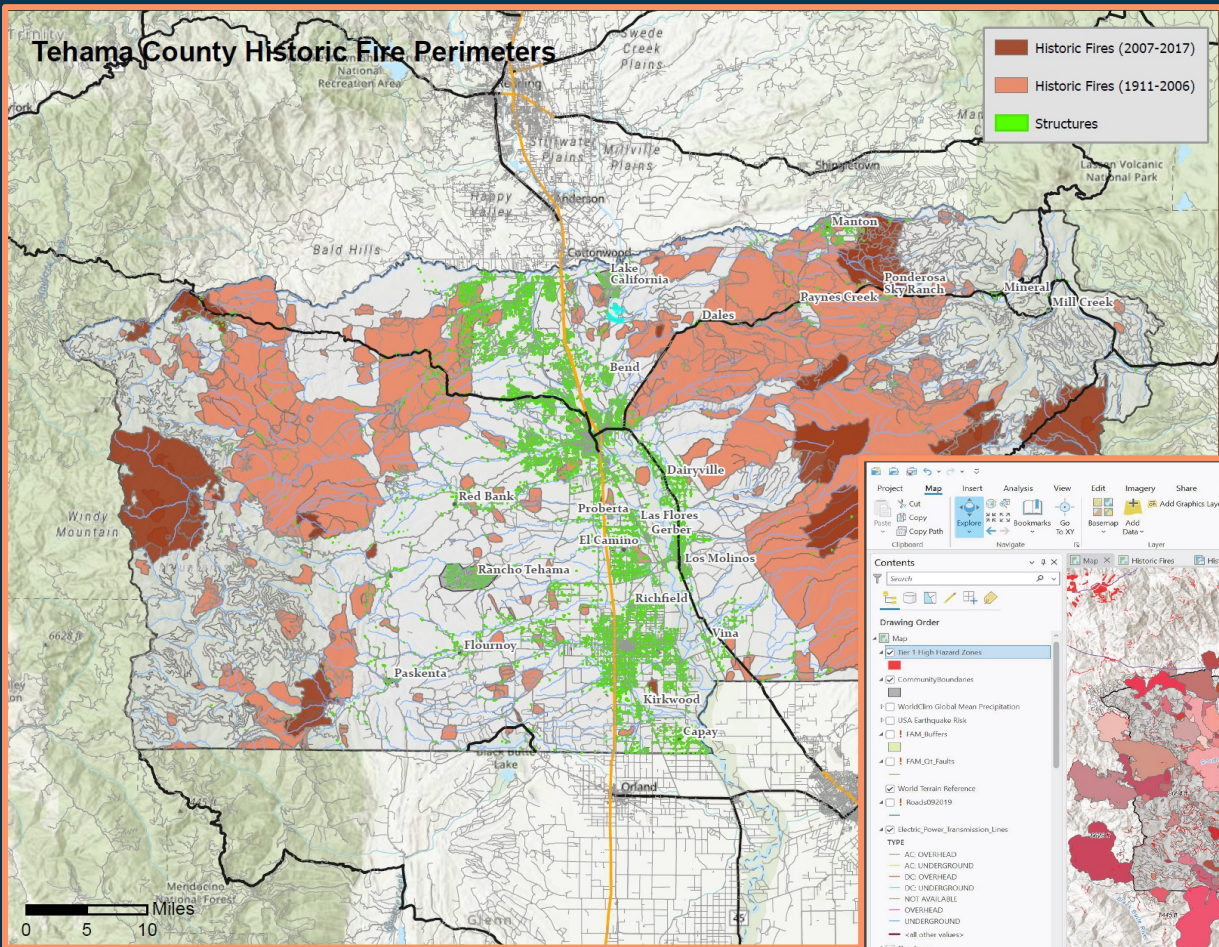
1 6 Shares



# VULNERABLE COMMUNITIES

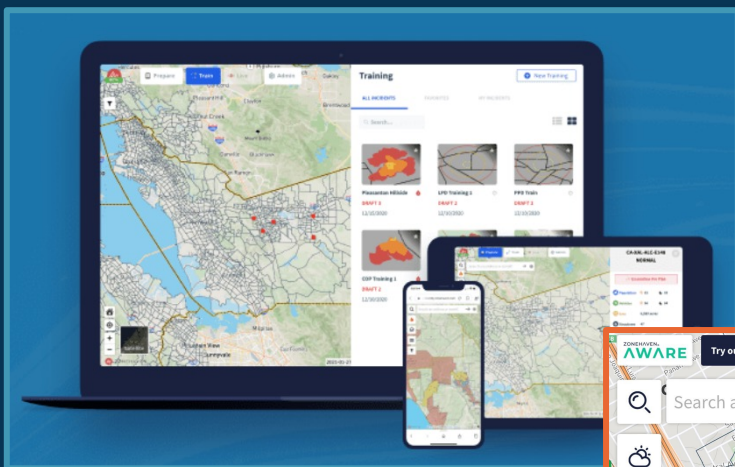


# GIS & MAPPING TOOLS



# TECHNOLOGY SOLUTIONS

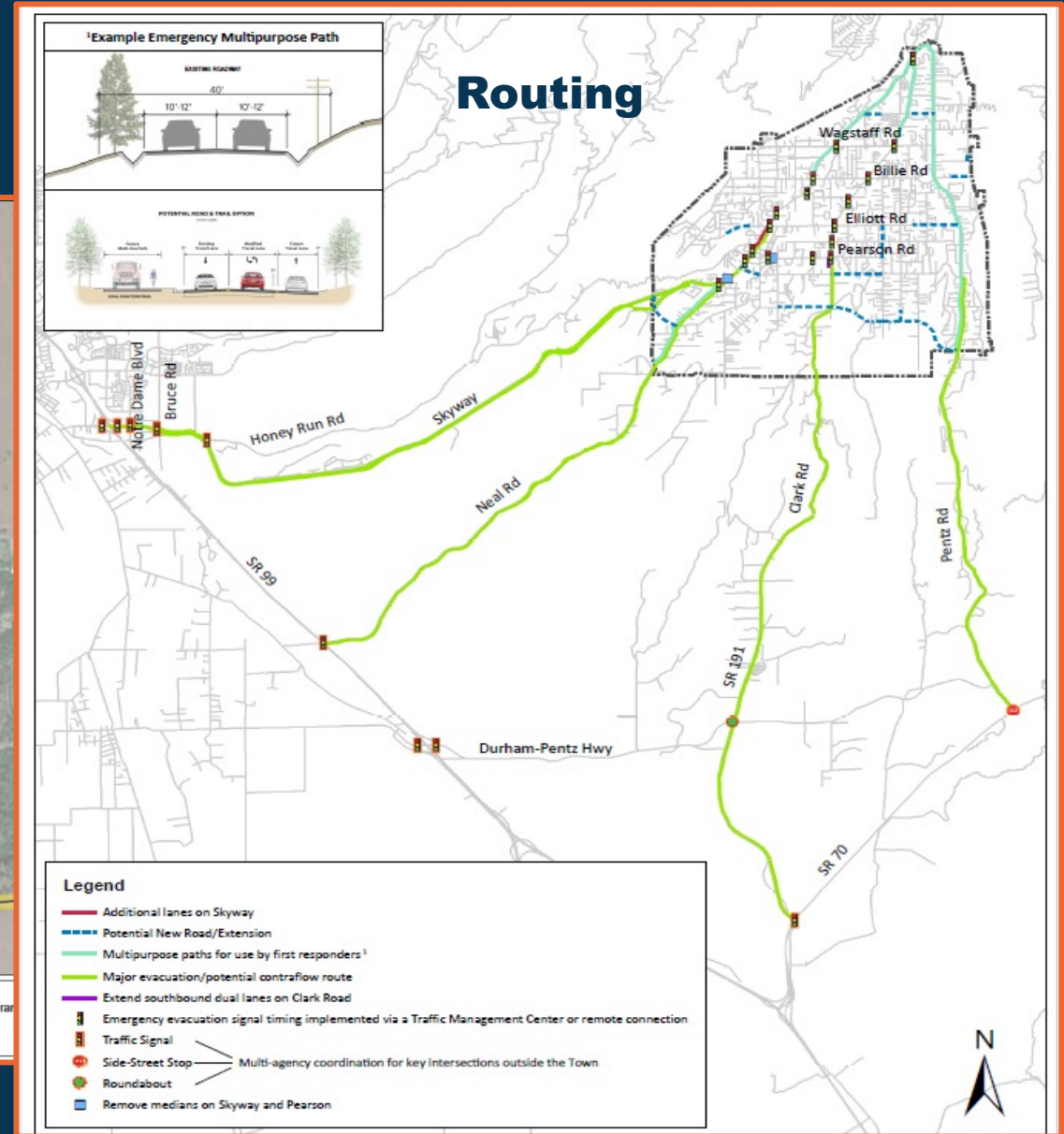
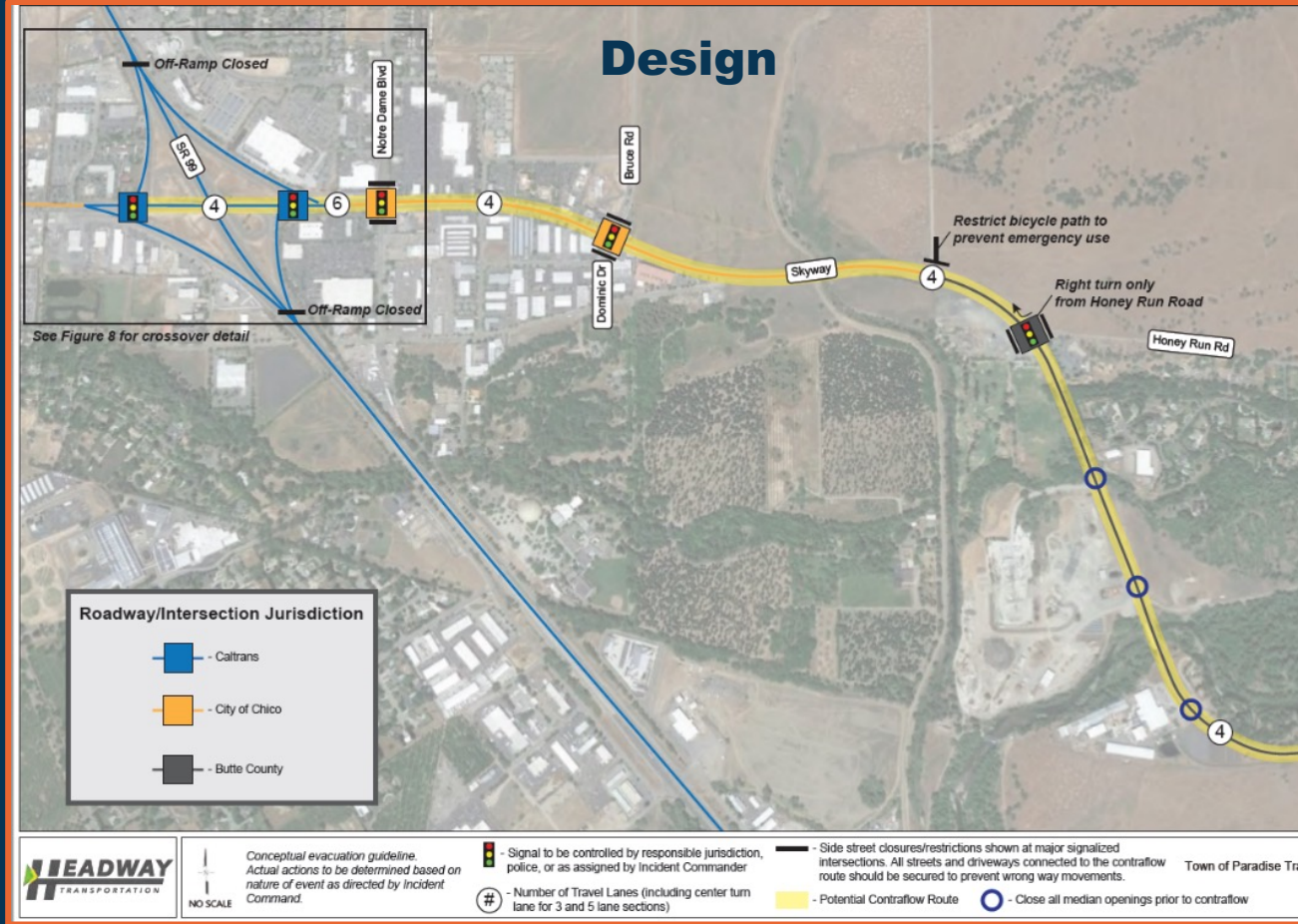
## Real-Time Evacuation Notices



# VULNERABILITY ASSESSMENT

Community	Fire Hazard Severity Zone	Distance From I-5 (miles)	Number of Ingress/Egress Points	Number of Structures	Shortest Distance to Recent Forest Fire Perimeter
Manton	3 (Very High)	28	4	300	0.5
Mill Creek	3 (Very High)	51	2	50	0.5
Mineral	3 (Very High)	41	3	170	2
Paskenta	2 (High)	19	4	115	4
Paynes Creek	3 (Very High)	22	4	95	2
Ponderosa Sky	3 (Very High)	27	2	120	0
Proberta	0 (Low)	2	4	250	14
Rancho Teham	3 (Very High)	17	2	870	8
Red Bank	3 (Very High)	15	3	170	7
Red Bluff	0 (Low)	0	10	12770	15
Richfield	0 (Low)	2	2	720	16
Vina	0 (Low)	8	3	310	10

# PROJECT DEVELOPMENT





# DESIGN SOLUTIONS

## REDESIGNING ROADS FOR EVACUATION

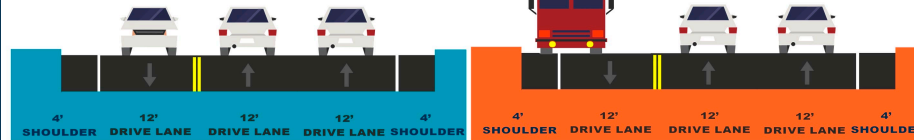
DAILY USE

USE DURING A FIRE

ORIGINAL ROAD



OPTION 1



OPTION 2

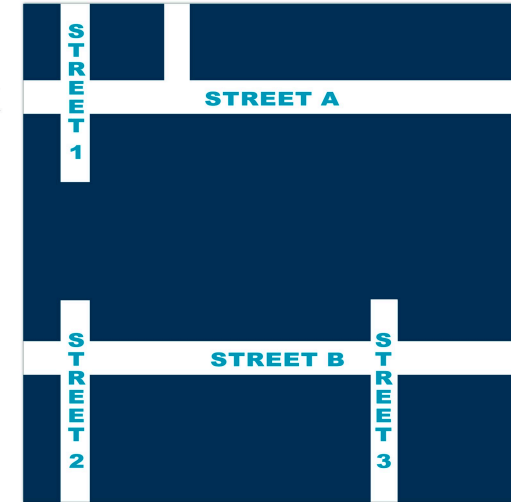


OPTION 3

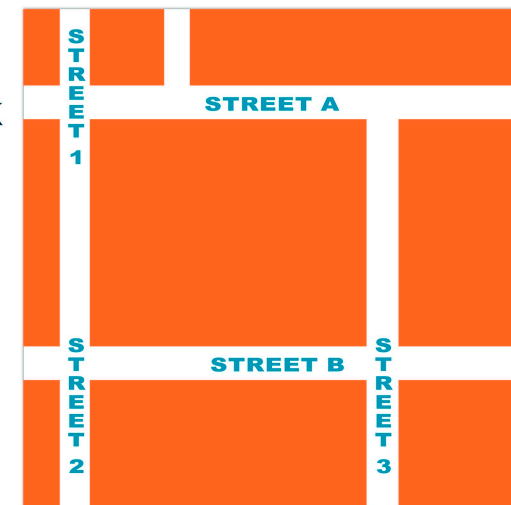


## CONNECTING ROADS FOR EVACUATION

ORIGINAL ROAD NETWORK



NEW ROAD NETWORK



# IMPLEMENTATION

- Prioritize Projects
- Distribute “Weight”
- Align with Funding

**Table 4.35  
Vulnerability Assessment Rankings**

Hazard	Location	Extent	Future Events	Health	Environment	Financial	Community	Score
Climate Change	3	2	2	3	3	0	2	15
Extreme Heat	3	2	3	3	3	0	2	16
Drought	3	2	3	2	3	0	2	15
Water Shortage	3	3	2	3	2	0	2	15
Storms, Rain, Hail & Lightning	3	1	3	3	2	1	1	14
Floods: Localized Stormwater Flooding	1	1	3	1	3	1	2	12
Floods: 100, 200, and 500 Year	1	1	2	1	2	3	2	12
Wind, Tornados	3	1	3	2	1	2	1	13
Extreme Freeze	3	2	2	2	1	0	1	11
Earthquake and Liquefaction	3	2	0		1	1	2	9
Landslides, Mudslides, and Debris Flows	1	1	2	1	2	2	0	9
Wildland Fire	1	3	3	3	3	3	2	18

Feasibility Category	Scale	Low	Medium	High
<b>Overall Significance (1-3)</b>	1 to 3	1 (less significant)	2 (somewhat significant)	3 (most significant)
<b>Human Life (1-3)</b>	1 to 3	1 (lower ability)	2 (some ability)	3 (highest ability)
<b>Property Protection (2)</b>	1 to 3	1 (lower ability)	2 (some ability)	3 (highest ability)
<b>Economic Improvements (1)</b>	1 to 3	1 (lower ability)	2 (some ability)	3 (highest ability)
<b>Administrative Feasibility (1)</b>	1 to 3	1 (not feasible)	2 (partially feasible)	3 (most feasible)
<b>Environmental Quality (1)</b>	1 to 3	1 (lower ability)	2 (some ability)	3 (highest ability)
<b>Financial Feasibility (1)</b>	1 to 3	1 (not feasible)	2 (partially feasible)	3 (most feasible)
<b>Local Champion (1)</b>	1 to 3	1 (no available partners)	2 (some coordination)	3 (full coordination)

# EDUCATION & PREPAREDNESS

## TEHAMA COUNTY EVACUATION GUIDE



### ROAD CONDITIONS

<https://www.localconditions.com/weather-tehama-california/26090/traffic.php>

Checkroad conditions for evacuation at

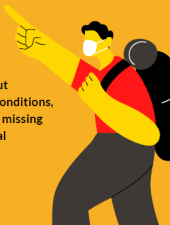
### LOCAL RADIO STATIONS

KPAY 1290AM  
KCEZ 102.1 FM  
KHSL 103.5 FM  
KNKQ97.3 FM  
KHHZ97.7FM

### TEHAMA COUNTY EVACUATION NOTIFICATION

<https://member.everbridge.net/index/892807736723620#/sjgnup>

Tehama Alert  
Get notifications about potential hazardous conditions, evacuations, dangers, missing people or other critical information.



### THIS GUIDE DOES THE FOLLOWING

- Provides helpful links to receive evacuation notifications and to check road closures
- Explains Level 1, Level 2, and Level 3 evacuation steps and associated checklist. It also addresses concerns for those with mobility issues
- Provides area-specific guides for high-risk fire areas

## WHAT TO DO DURING A FIRE

People who need help or more time to evacuate should evacuate at level 1 or 2. This includes assisted living centers, people with disabilities, people needing help with small children, and people with medical conditions.

### LEVEL 1 BE READY

Pack your valuables. Include important documents such as passports, birth certificates, insurance information, medications, medical equipment, and animal vaccination records.

### LEVEL 2 GET SET

Monitor the news. Follow Tehama County Sheriff's Office and Tehama County Emergency Management's social media pages, local TV and radio news broadcasts.

### LEVEL 3 GO!

Evacuate - information will be provided regarding where you can go to get information, resources, and support

## FIRE SAFETY TIPS FOR YOUR HOME

### Fire detectors save lives

Install smoke and carbon monoxide detectors and remember to charge the batteries.

### Create an escape plan

Ensure all members of the family know the emergency exits at home in case of fire.

### Switch off appliances

Double check and make sure appliances are not left running after use.

### Monitor your extinguishers

Constantly check your fire extinguishers and replace as necessary.

### Clean vents and dryers

Clean lint filters after use and ensure all vents are unobstructed.

**BE AWARE AND STAY SAFE!**



## DEFENSIBLE SPACE

0'-5' Noncombustible Zone 5'-30' Intermediate Zone 30'-100' Extended Zone



### 0'-5' Non Combustible Zone

- Use hardscape like gravel, pavers, concrete and other noncombustible mulch materials. No combustible bark or mulch
- Remove all dead and dying weeds, grass, plants, shrubs, trees, branches and vegetative debris (leaves, needles, cones, bark, etc.)
- Check your roofs, gutters, decks, porches, stairways, etc.
- Remove all branches within 10 feet of any chimney or stovepipe outlet
- Limit plants in this area to low growing, nonwoody, properly watered and maintained plants
- Limit combustible items (outdoor furniture, planters, etc.) on top of decks
- Relocate firewood and lumber to Zone 2
- Replace combustible fencing, gates, and arbors attach to the home with noncombustible alternatives
- Consider relocating garbage and recycling containers outside this zone
- Consider relocating boats, RVs, vehicles and other combustible items outside this zone

### 5'-30' Intermediate Zone

- Remove all dead plants, grass and weeds (vegetation)
- Remove dead or dry leaves and pine needles from your yard, roof and rain gutters.
- Remove branches that hang over your roof and keep dead branches 10 feet away from your chimney.
- Trim trees regularly to keep branches a minimum of 10 feet from other trees.
- Relocate wood piles to Zone 2.
- Remove or prune flammable plants and shrubs near windows.
- Remove vegetation and items that could catch fire from around and under decks, balconies and stairs.
- Create a separation between trees, shrubs and items that could catch fire, such as patio furniture, wood piles, swing sets, etc.

### 30'-100' Extended Zone

- Cut or mow annual grass down to a maximum height of 4 inches.
- Create horizontal space between shrubs and trees. (See diagram)
- Create vertical space between grass, shrubs and trees. (See diagram)
- Remove fallen leaves, needles, twigs, bark, cones, and small branches. However, they may be permitted to a depth of 3 inches.
- All exposed wood piles must have a minimum of 10 feet of clearance, down to bare mineral soil, in all directions.

# FUNDING

- Planning Grants
- Infrastructure Grants
- Leveraged Funds



## FEMA

- Building Resilient Infrastructure and Communities (BRIC)
- Hazard Mitigation Program

## USDOT

- Rebuilding American Infrastructure (RAISE)
- Promoting Resilient Communities (PROTECT)
- Reconnecting Communities Pilot
- Infrastructure for Rebuilding America (INFRA)

## CALFIRE

- Developing Projects

# WHAT'S NEXT

- Stakeholder Engagement
- Data Collection
- Community Engagement
- Analysis



# THANK YOU

## TEHAMA COUNTY

**SAFETY, SECONDARY ACCESS  
COMMUNITY PLANNING &  
EVACUATION ROUTING  
PROJECT**



**Cal OES**  
GOVERNOR'S OFFICE  
OF EMERGENCY SERVICES

