

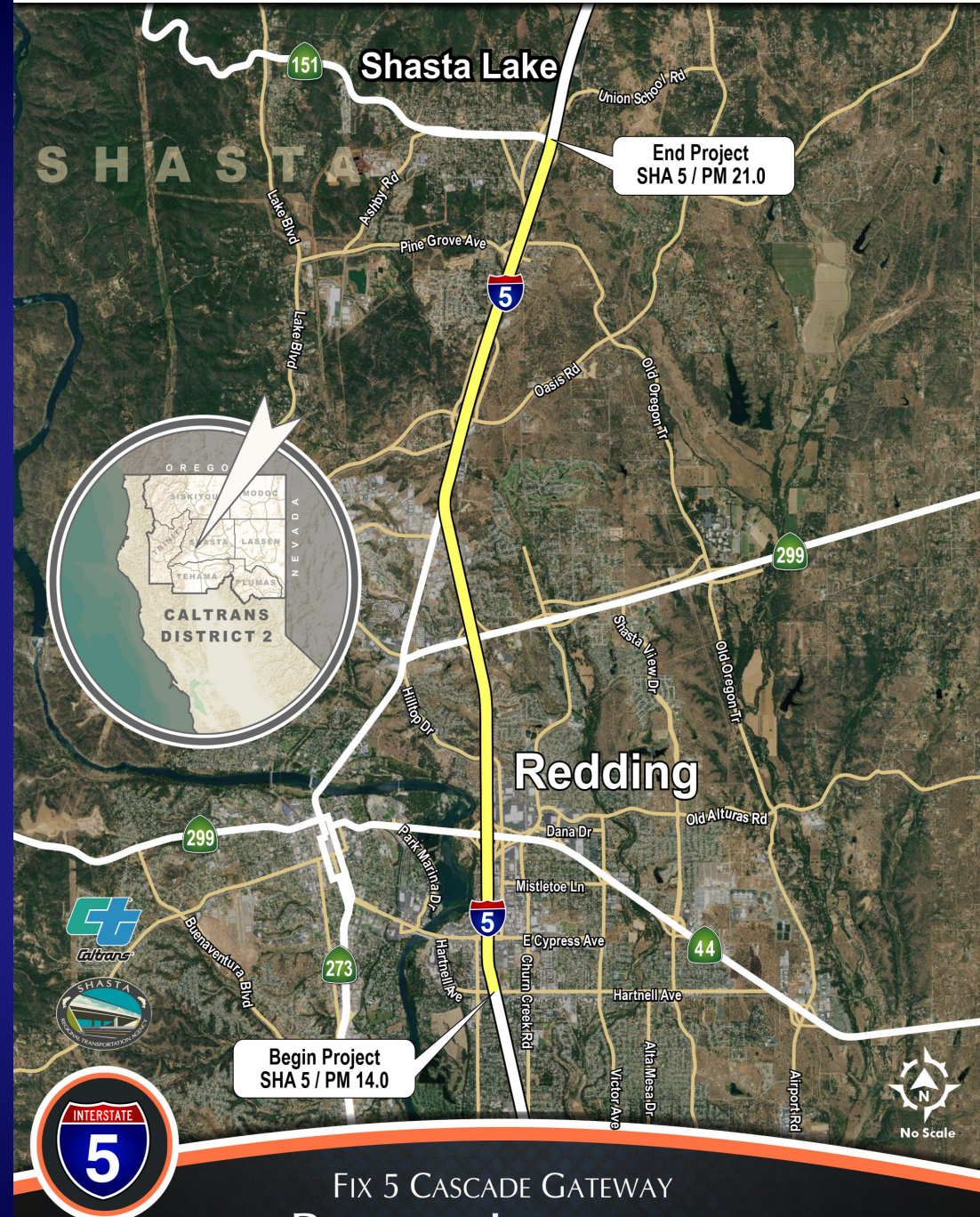
# FIX 5 CASCADE GATEWAY (F5CG)

Gateway to the  
Cascades, the North  
Coast, and Inland  
Communities





# I-5 CORRIDOR MAP



# FIX 5 CASCADE GATEWAY PROJECT LOCATION

# Fix 5 Cascade Gateway

---

---



## BENEFITS:

- Improves Safety
- Improves Goods Movement
- Reduces Greenhouse Gases (GHG)
- Improves Operations
- Improves Emergency Evacuations

# Fix 5 Cascade Gateway

---

---



## MAJOR SCOPE ITEMS:

- Construct & Convert Lanes to Managed Truck Lanes
- Install Traffic Management System (TMS) Elements
- Improve Operations with Auxiliary Lanes
- Install Medium/Heavy-Duty Electric Vehicle Chargers
- Increase Vertical Clearance of SB I-5 Under SR 273 / NB I-5 Connector Ramp



# Managed Truck Lanes

---

---

- NB: PM 16.8 to 22.1 (3.6 miles converted, 1.7 miles new)
- SB: PM 14.0 to 22.1 (4.4 miles converted, 3.7 miles new)
- Managed with TMS elements
- Optimize freight throughput
- Decreases speed differentials
- Decreases weaving/merging conflicts
- Decreases Greenhouse Gases



# FIX 5 CASCADE GATEWAY TRUCK ONLY LANES

# ITS Elements





# Managed Truck Lanes

---

---



## CLIMATE EVENTS CLOSE I-5:

- 18 closures so far this year
- TMS elements inform drivers I-5 is closed
- TMS elements manage trucks to use #1 & #2 lanes
- Keep #3 lane & interchanges operating
- TMS elements inform/route vehicles to use detour

# NB I-5 During Closure at Oasis Rd





# I-5 CLOSURE DETOUR

# Auxiliary Lanes

---

---



- Between SR 299 & SR 44 in both directions
- Facilitates East & West goods movement on or to SR 299 & SR 44
- Benefits freight movement to/from Humboldt Bay Port & to/from inland destinations
- Improves the safety of merging/weaving movements
- Provides the ability to quickly & safely evacuate

# Electric Vehicle Chargers

---

---



- Two medium/heavy-duty electric vehicle chargers
- NB Cottonwood Commercial Vehicle Enforcement Facility (CVEF)
- Allows NB freight trucks to charge before continuing north, to the east, or to the west

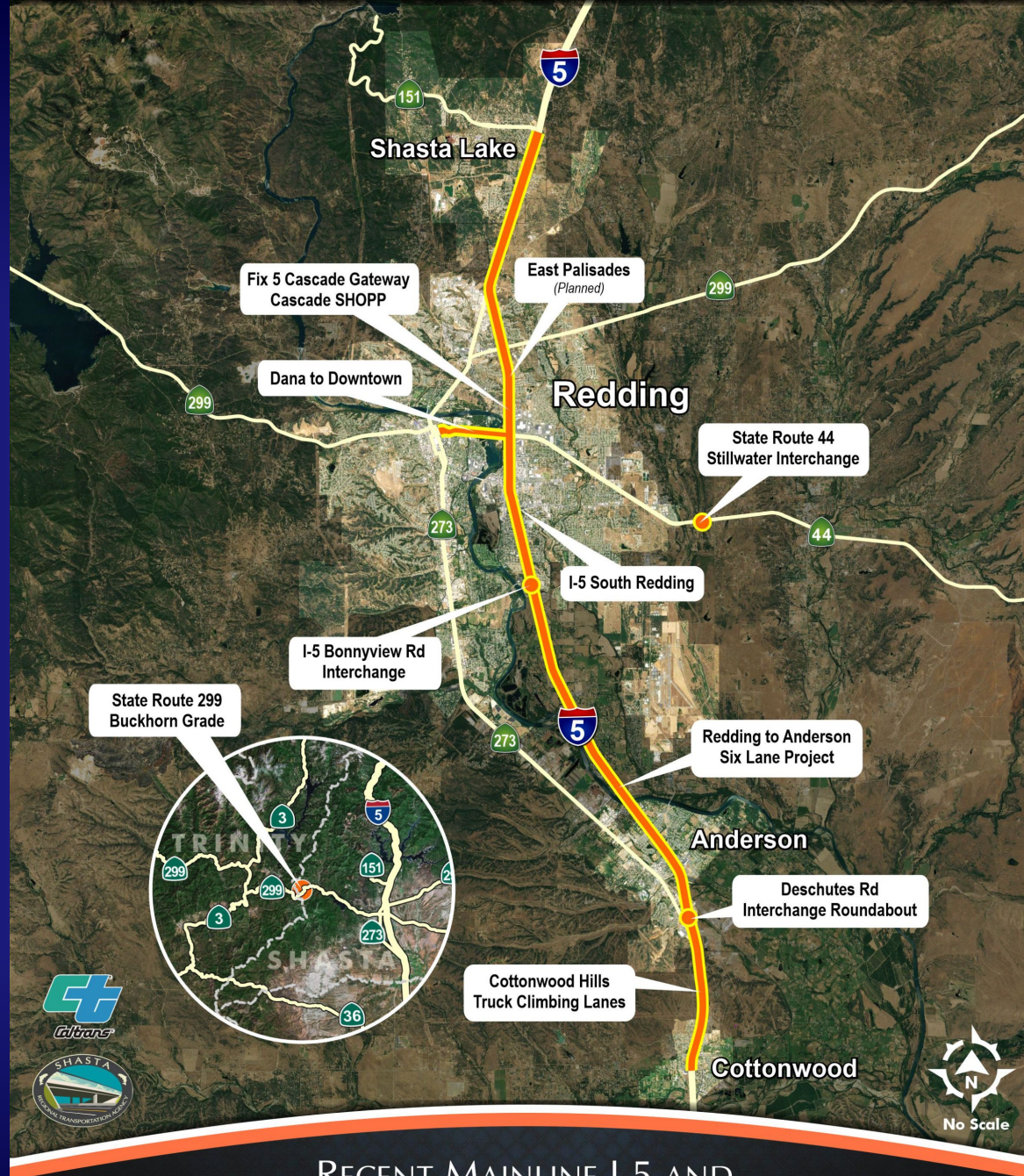
# Increase Vertical Clearance

---

---



- SB I-5 under the SR 273/NB 1-5 connector ramp
- Removes height permit loads from traveling on SR 273 for over 16 miles
- Will decrease the miles height permit loads currently travel



# RECENT MAINLINE I-5 AND SURROUNDING NETWORK IMPROVEMENTS

# Funding

---

---



- State Transportation Improvement Program
- State Highway Operations & Protection Program
- Trade Corridor Enhancement Program (Cycles 2 & 3)
- Coronavirus Response & Relief Supplemental Appropriations Act of 2021



# Funding

---

---



- Community Project Funding
- Port/Freight Improvement Program
- Infrastructure Investment & Jobs Act

# Partners & Supporters

---

---



- Shasta Regional Transportation Agency
- Shasta County
- City of Redding
- City of Shasta Lake
- Humboldt County Association of Governments (HCAOG)
- Humboldt County

# Partners & Supporters

---



- Trinity County
- CHP
- Trucking Association
- Humboldt Bay Harbor, Recreation & Conservation District

# Questions?

---

---