

Redding Airports

Jim Wadleigh
Airports Manager
April 12, 2023

Redding Airports



Overview

- **Air Service Trends**
- **A Look Ahead**
- **Redding Air Attack Base**

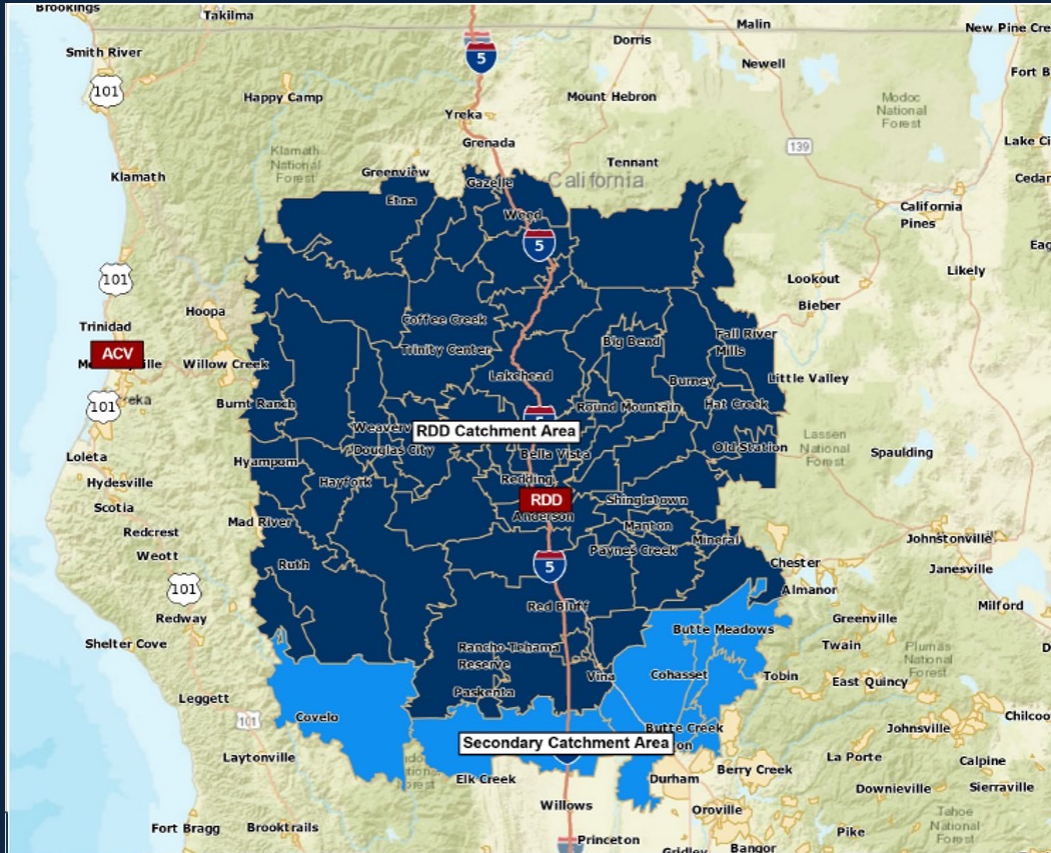
Redding Airports



FASTEN SEAT BELT

Here we go!

Air Service – Catchment Area



Large population needing additional air service

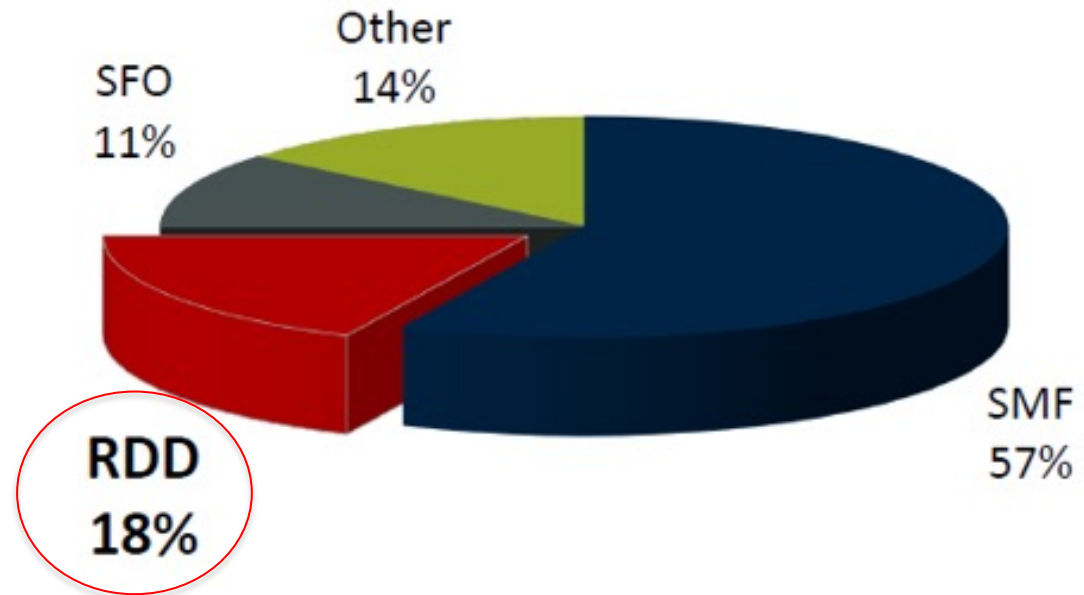
- Primary catchment area - 278,000
- Secondary catchment area - 172,000
- Total catchment area = 450,000

With no Chico service, RDD captures some travelers from the secondary area

- Chico to Redding 65 miles vs. SMF 85 miles
- SMF more expensive to park, shuttle bus, etc.

Air Service Retention - 2019

Originating Airport	Pax	PDEW	Retention
Domestic			
SMF	315,271	431.9	61
RDD	94,560	129.5	18
SFO	29,991	41.1	6
Other	77,025	105.5	15
Subtotal	516,847	708.0	100
International			
SFO	37,607	51.5	54
SMF	18,463	25.3	26
RDD	8,253	11.3	12
Other	5,946	8.1	8
Subtotal	70,269	96.3	100
Total			
SMF	333,734	457.2	57
RDD	102,813	140.8	18
SFO	67,598	92.6	11
Other	82,971	113.7	14
Total	587,116	804.3	100



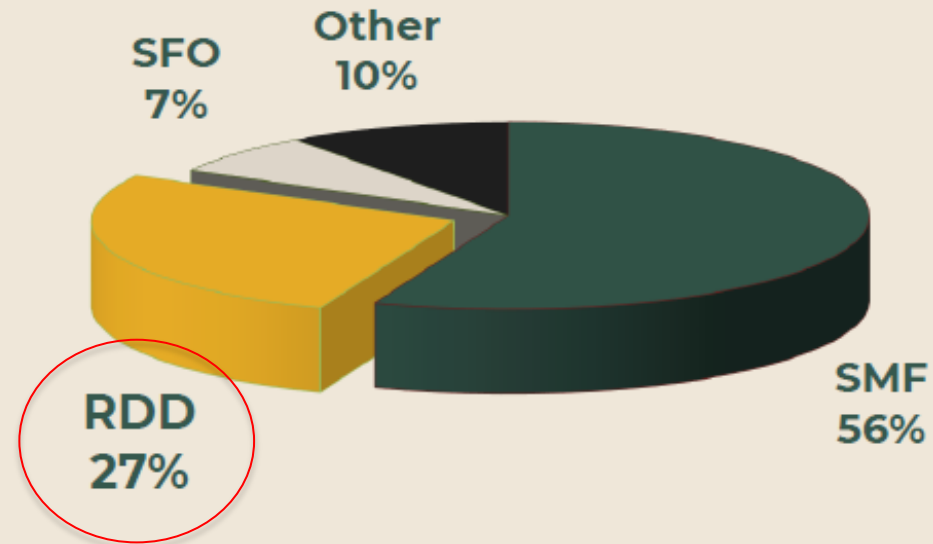
- 82% or 663.4 catchment area PDEW use alternate airports.
- Retention increased 2% points since the last analysis due in part to the nonstop LAX service.

Increase in Air Service



Air Service Retention - 2022

Originating Airport	YE Q4 2021 Pax	PDEW	Retention
Domestic			
SMF	221,386	303.3	56
RDD	109,361	149.8	27
SFO	23,157	31.7	6
Other	42,564	58.3	11
Subtotal	396,468	543.1	100
International			
SMF	16,688	22.9	50
SFO	8,533	11.7	26
RDD	5,619	7.7	17
Other	2,204	3.0	7
Subtotal	33,044	45.3	100
Total			
SMF	238,074	326.1	56
RDD	114,980	157.5	27
SFO	31,690	43.4	7
Other	44,768	61.3	10
Total	429,512	588.4	100



- **73% or 430.9 catchment area PDEW used alternate airports**
- **Retention increased 10% points - expected to improve again with a full year of new nonstop service to SEA, BUR and LAS**

Air Service Trends



As RDD retains more of its local population



Sacramento, and other Airports, are decreasing

Air Service Trends

Here are a couple visual representations for the changes at RDD.

Air Service Trends - 2019



Air Service Trends

This is what it routinely looks like:

Air Service Trends – 2021 & 2022



Air Service Trends

So, what exactly happened?

Air Service Trends

So, what exactly happened?

Investments

New Service – United Airlines

March 2019, United added daily service to LAX.

Backed by a \$1M Revenue Guarantee

Changed the game.

- Attractive - business traveler (early DEP/late ARR)
- Offered reliability
- Added a leisure market
- Overall another way to get around without the “SFO factor”



New ULCC Start-up – Avelo Airlines

May 2021

- Avelo Airlines service to **BUR**
 - 737-800, 189 seats
 - 2x - 3x per week

Jan 2022-Dec 2022

- Avelo Airlines service to **LAS**
 - 737-800, 189 seats
 - 2x - 3x per week



More New Service – Alaska Airlines

June 2021, Alaska Airlines added daily service to SEA. Backed by \$400K MRG.

- Attractive to the business traveler
- Offered reliability
- Added another leisure market
- Yet another way to get around



All Service(s)



Fun Fact



Starting to look like a small hub airport with pax movement ;)

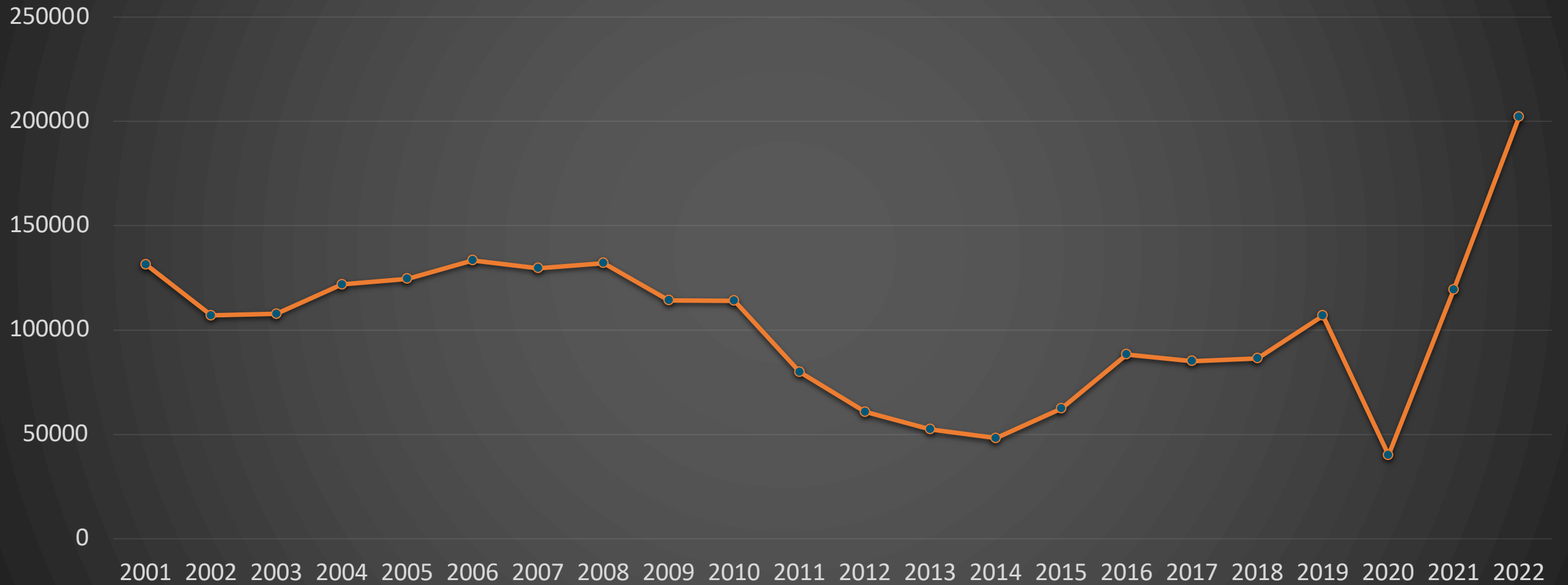
I.e. LAX → RDD → SFO

SFO → RDD → LAX

SEA → RDD → LAX

Air Service Trends

Passengers Moved



Quick Look – RDD Economic Output for 2021

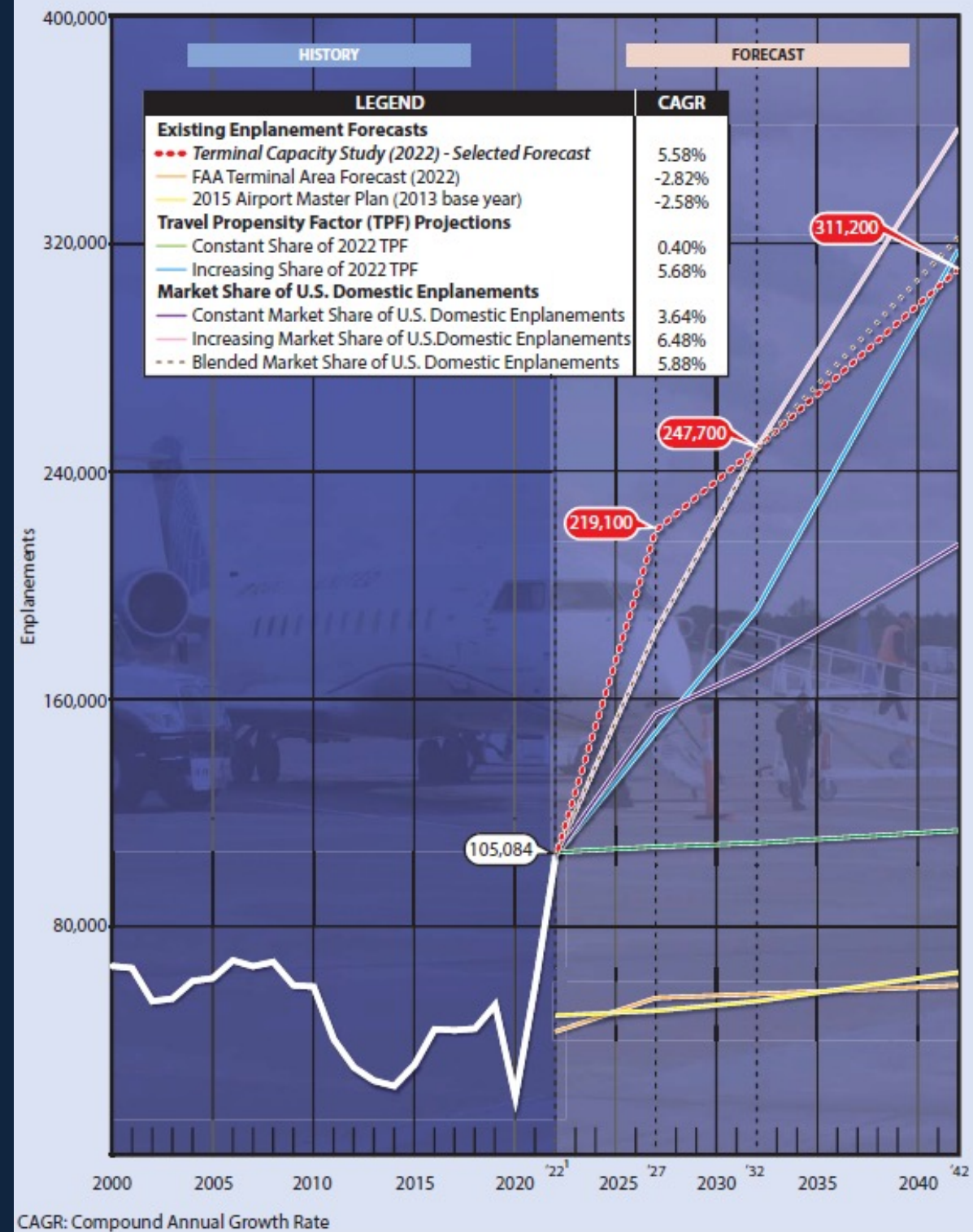
If the Airport were to vanish today....this is what we would lose each year.

Category	Employment	Payroll	Output
On-Airport	910	\$57.0 M	\$159.1 M
GA Visitors	69	\$2.7 M	\$8.0 M
Commercial Visitors	226	\$8.2 M	\$33.1 M
CIP	98	\$4.6 M	\$18.0 M
Total	1,303	\$72.4 M	\$218.3 M

What's Next for RDD?

Terminal Expansion

- Submitted a 20-year forecast using FAA methodologies
- Once approved, we get to work with designing the next Terminal



A Look Ahead – Eco Friendly Air Transportation

More and More, Airports Have a Focus on Sustainability

- Net-Zero Emission Goals by 2050 (some aren't waiting)
- Alternative Propulsion
 - Hydrogen Fuel
- Electrification
- Short Term Changes/Switching
 - Aircraft
 - GSE



A Look Ahead – Eco Friendly Air Transportation

Vision Statement for the Redding Regional Airport:

“Redding Regional Airport aspires to be a regional leader that provides economic vitality, public safety, and resource protection. We will do this by operating proactively, promoting sustainable growth, and remaining engaged in the developing world of aviation.”



- RDD Airport Strategic Plan (2022)

A Look Ahead – Eco Friendly Air Transportation

Some of the trends:

- Airlines → Ground Service Equipment – Changing from Diesel to Electric
- Airport → Improvements with Electrical Infrastructure



A Look Ahead – Eco Friendly Air Transportation

Electric GSE:



A Look Ahead – Eco Friendly Air Transportation

Electric GSE:



A Look Ahead – Eco Friendly Air Transportation

Airport Vehicle (Plug-in Hybrid):



Short Term – Aircraft Changes

Winter 2022 – Aircraft Switch

- Switched the Q400 to the more efficient Embraer 175.
- Improved fuel efficiency to reduce CO2 emissions
- Quicker, thereby reducing air crew time needed



Short Term – Aircraft Changes

Aircraft Switch – Short Haul will soon be a reality (Air Canada - 2028?)

- Range ~300 miles
- Rolls-Royce Electrical is "pioneering sustainable electric aircraft technology to power the urban and regional air mobility markets of tomorrow."



What Are Some of the Challenges

- Infrastructure Demands – Electric Grid
 - Electric Aircraft Have a Shorter Range
 - On-Site Storage – Resiliency – Is On-Site Feasible?
 - Major Switch in Infrastructure - Grant Availability For Airports/Airlines?
- Hydrogen
 - More Expensive
 - Place to Store
- What are all the costs going to do to airfare?



Redding Air-Attack Base (US Forest Service)



Wildfires in the North State Region



Redding Air-Attack Base (US Forest Service)



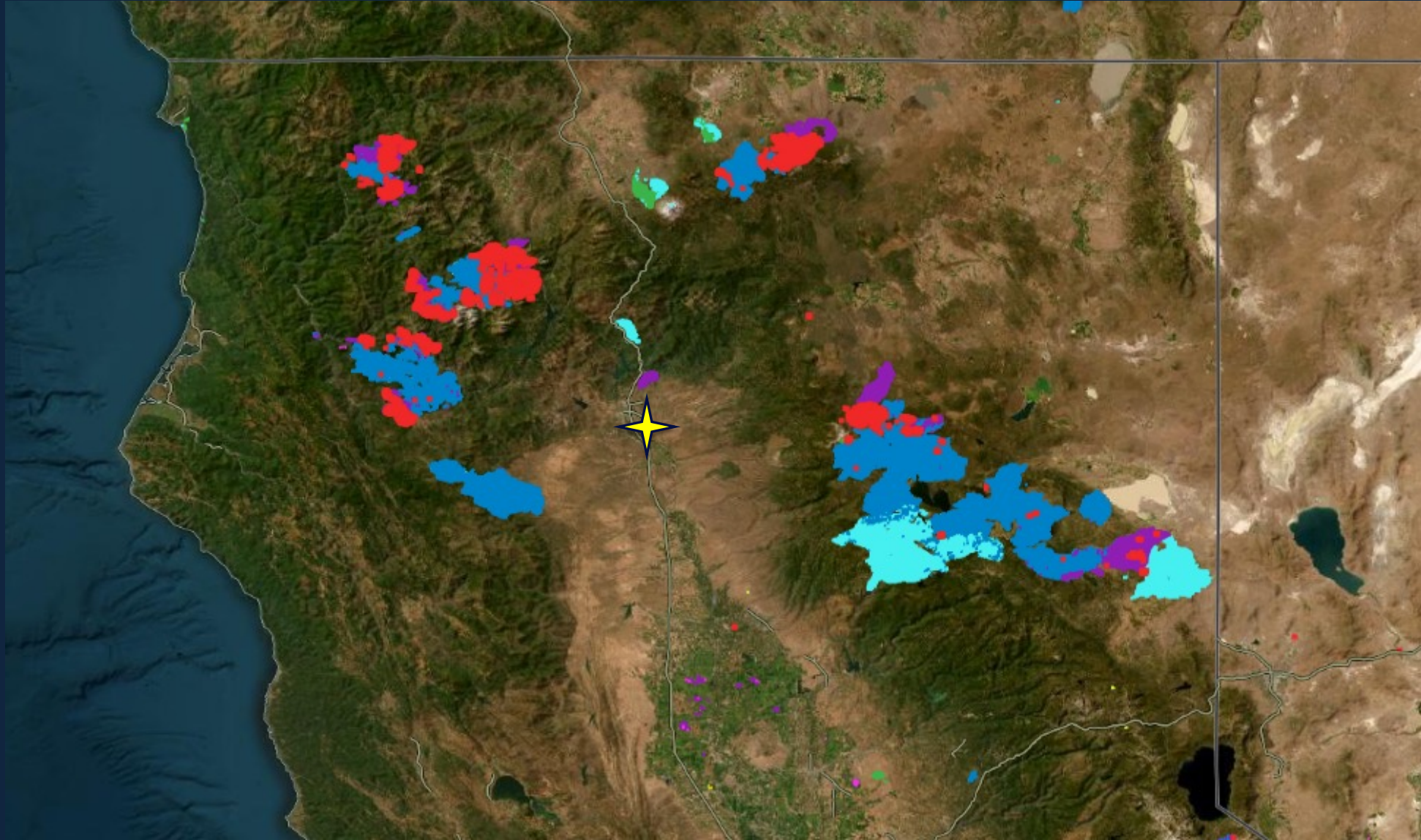
Redding Air-Attack Base (US Forest Service)



Redding Air-Attack Base (US Forest Service)



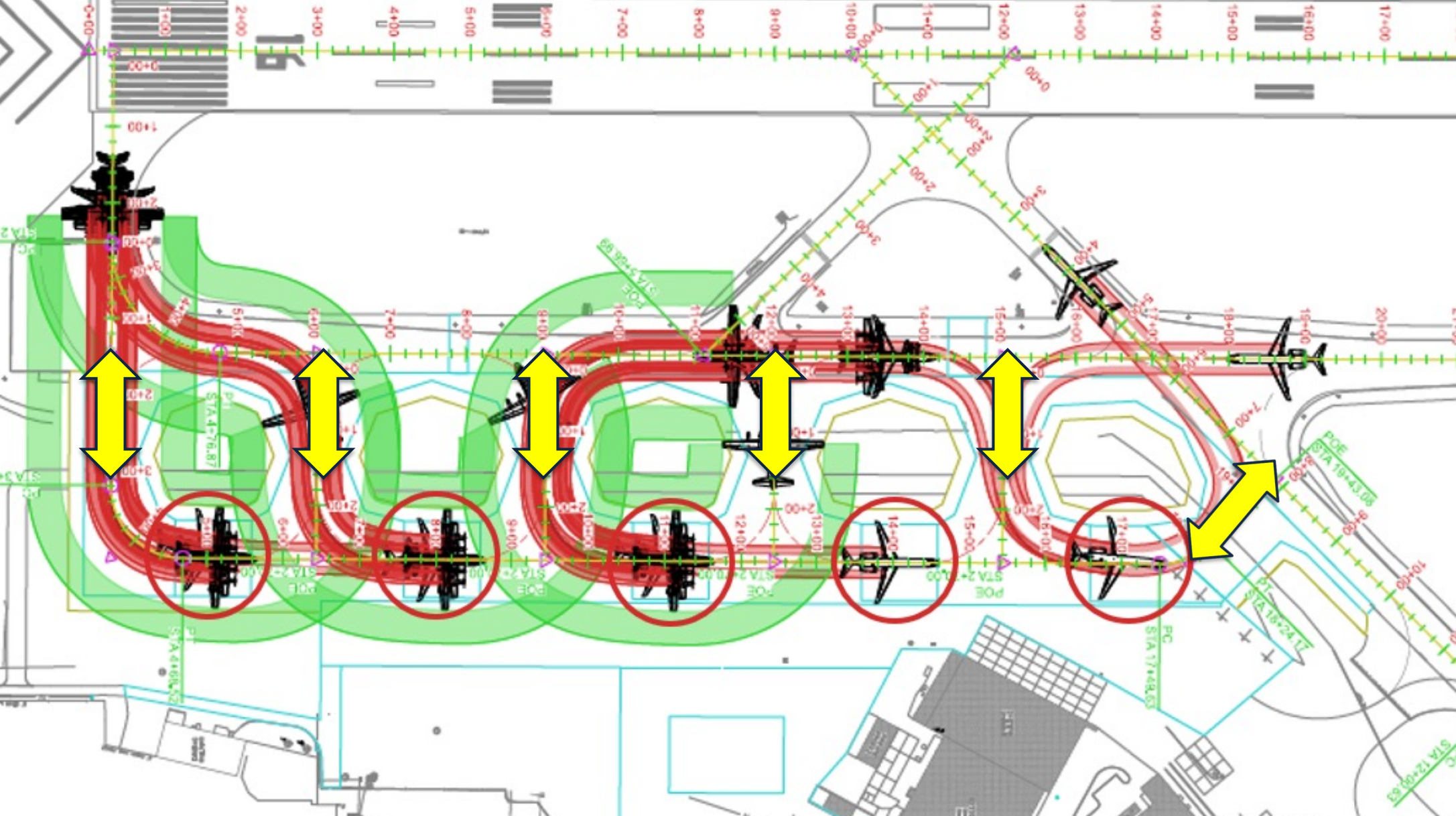
Wildfire-Attack – Regional Response



USFS Modernization Project



USFS Modernization Project – Under Const.



Questions?





Thank You!

Jim Wadleigh, Airports Manager

jwadleigh@cityofredding.org

530.224.4322